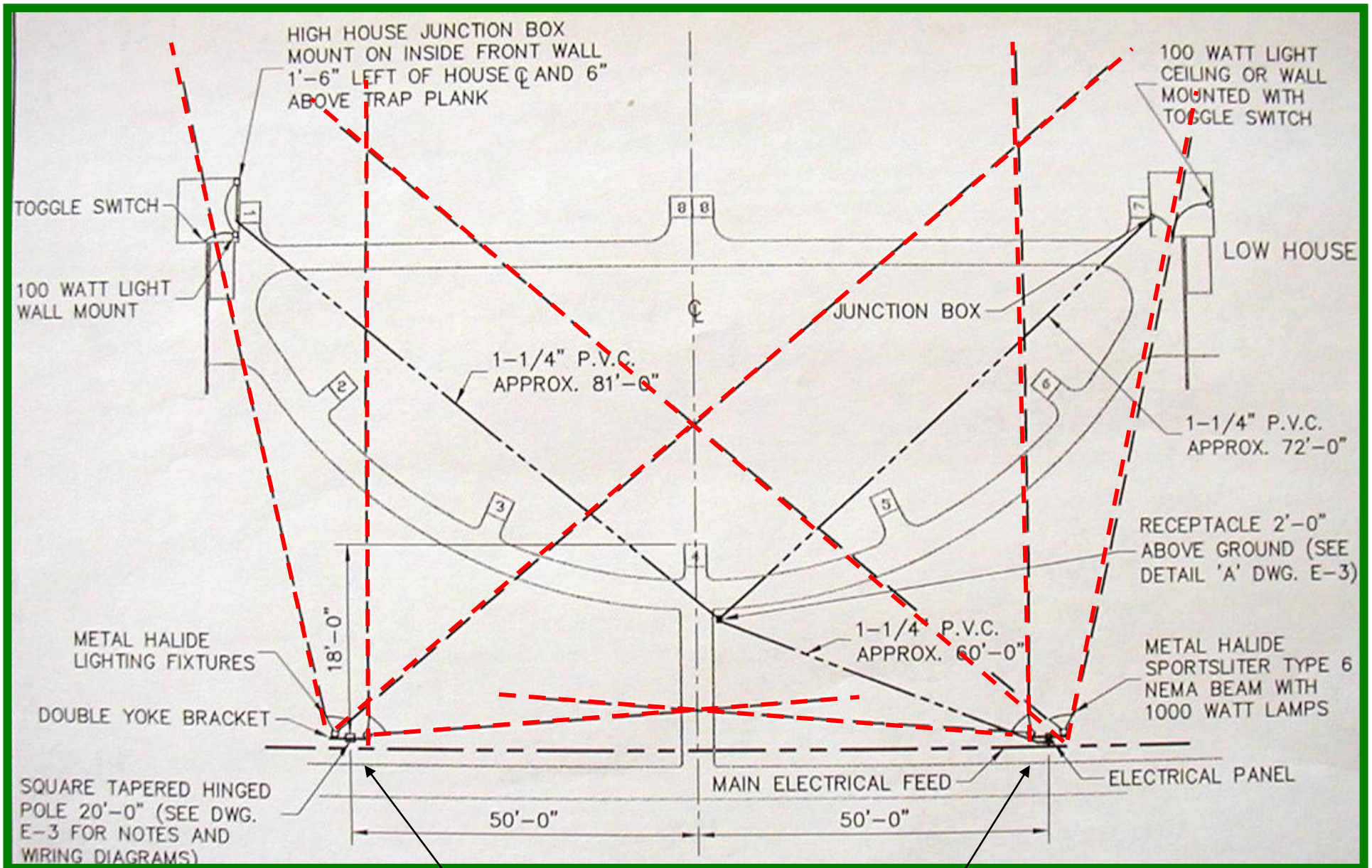
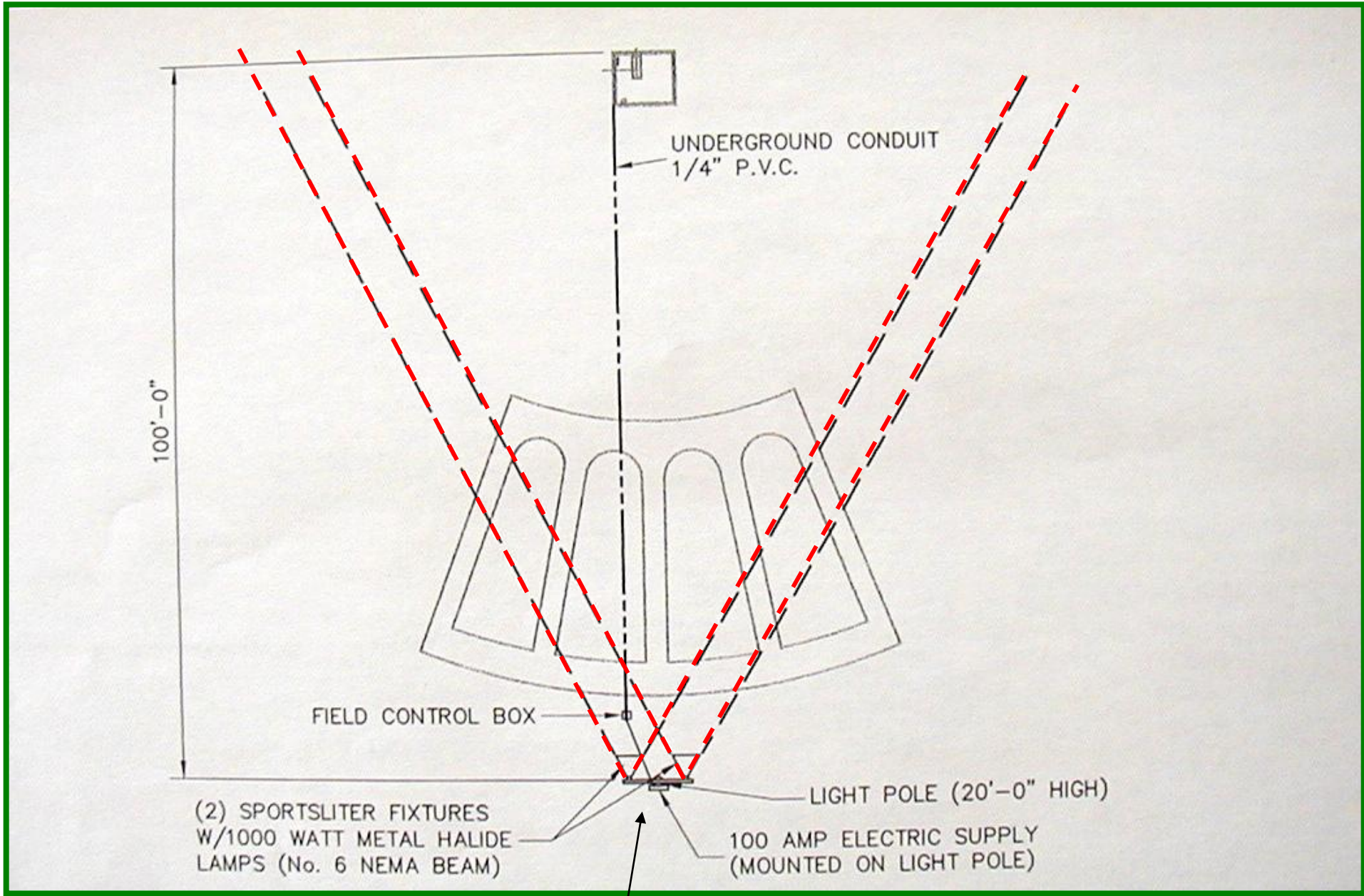


Lighting Requirements for Skeet / Trap / Olympic



4 x 1000watt Nema Beam - 2 on each pole



2 x 1000watt Nema Beam



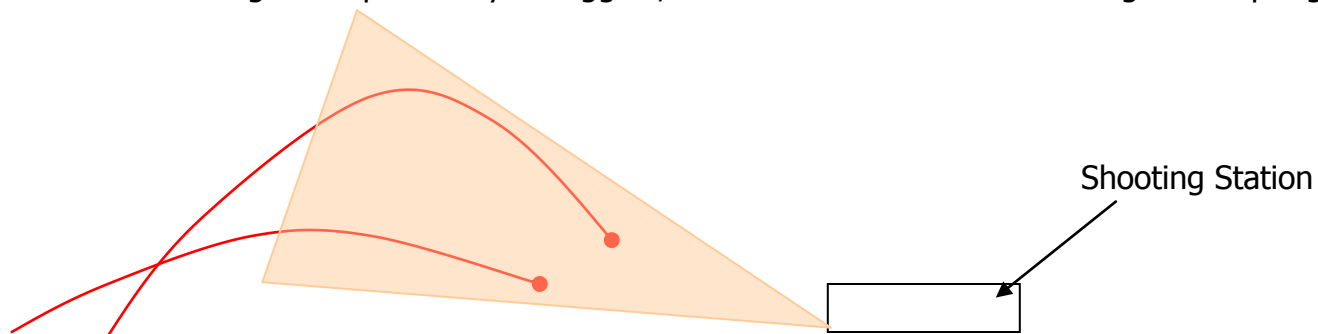
## SKEET - TRAP Lighting for Multiple Fields:

Each Skeet Field requires the 4 x 1000 watt Nema Beam Lights as detailed above. For each field that has a Trap overlay, the lighting required for that discipline should be overlaid.

Each field will have 6 x 1000 watt Nema Beam Lights.

## SPORTING CLAYS

As previously mentioned, Sporting Clay Stations are individually lit according to the target presentation. You should allow two of the same lights for each station. For Compact Sporting four lights as a minimum should be allowed for. You mention tall poles for each station, but the direction of targets for each station will determine the angle of the lights. Yes it would be fine to have the lights on poles as you suggest, but we would also need some "ground-up" lights – or distant shot lights.



## TYPE of LIGHTS

Nema Beam Type 6 Sportsliter 1000 watt Metal Halide (or similar).

Note: One Metal Halide of 1000w = Three Quartz 1500w

Also Metal Halide has a life of 10,000 hours, whereas Quartz is only 2,000 hours